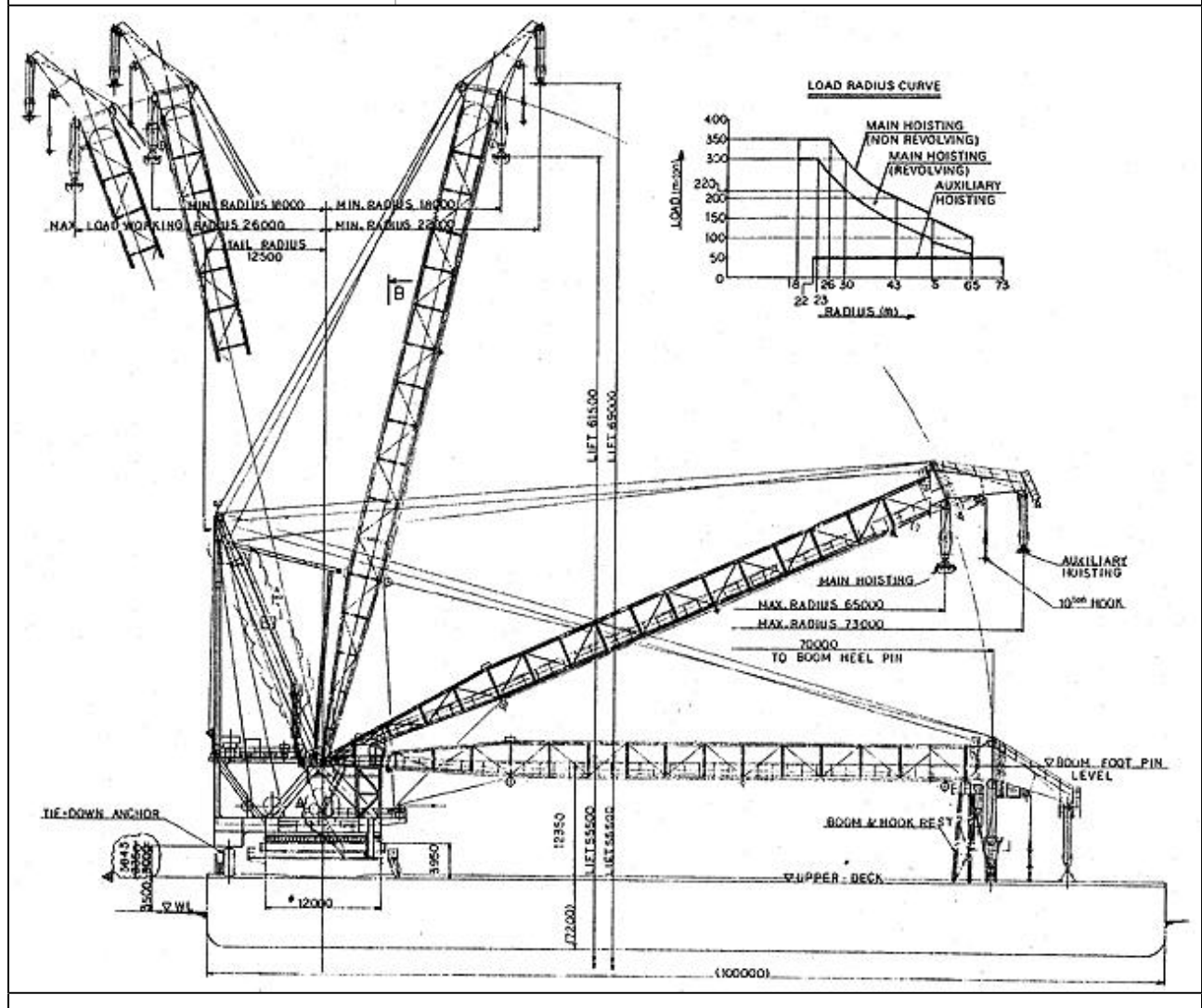


FLOATING CRANE ZHI FU DAO	
<b>PRINCIPAL PARTICULARS</b>	
Year Built	1988
Port of Registry	Yantai, P.R. China
Length O.A.	109.00 m
Length B.P.	100.00 m
Breadth Molded	27.00 m
Depth Molded	7.20 m
Draft Designed	4.20 m
Gross Tonnage	6222t
Net Tonnage	1866t
Full Load Displacement	10875t
Diesel Oil	100 m <sup>3</sup>
Fuel Oil	416 m <sup>3</sup>
Fresh Water	1744 m <sup>3</sup>
Accommodation	140
Endurance	45d
Deck Loading Space	1000 m <sup>2</sup>
Deadweight	2000t



<b>CRANE</b>			
	<b>Main Hook</b>	<b>Auxiliary Hook</b>	<b>Whip</b>
<b>Type of Hook</b>	Single	Single	Single
<b>Load</b>	350t (fixed at aft) 300t (360° revolving)	50t	10t
<b>Working Radius</b>	350t, 18 - 26 m (fixed at aft) 300t, 18 - 23 m (360° revolving)	18 - 73 m	18 - 70 m
<b>Lifting Height (to main deck)</b>	73.5 m	81 m	75 m
<b>Lifting Speed</b>	350t, 3.6 m/min 200t, 6.0 m/min 100t, 10 m/min	50t, 15 m/min 18t, 35.7 m/min	
<b>DECK MACHINERY</b>			
Windlass	2 sets		
Weight of Anchor	4.5t		
Winch	8 x 25t		
Mooring Capstan	4 x 16t		
Weight of Working anchor	6t		
Line Length	500 - 1000 m		
Small Crane	1 x 16t		
<b>GENERATOR</b>			
	3 x 520KW, 50Hz, 400V AC		
	1 x 276KW, 50Hz, 400V AC		
<b>OTHERS</b>			
	Advanced diving and underwater working equipments		