

**NAN TIAN LONG**  
**900T LIFTING CAPACITY**  
**FULLY REVOLVING FLOATING CRANE**

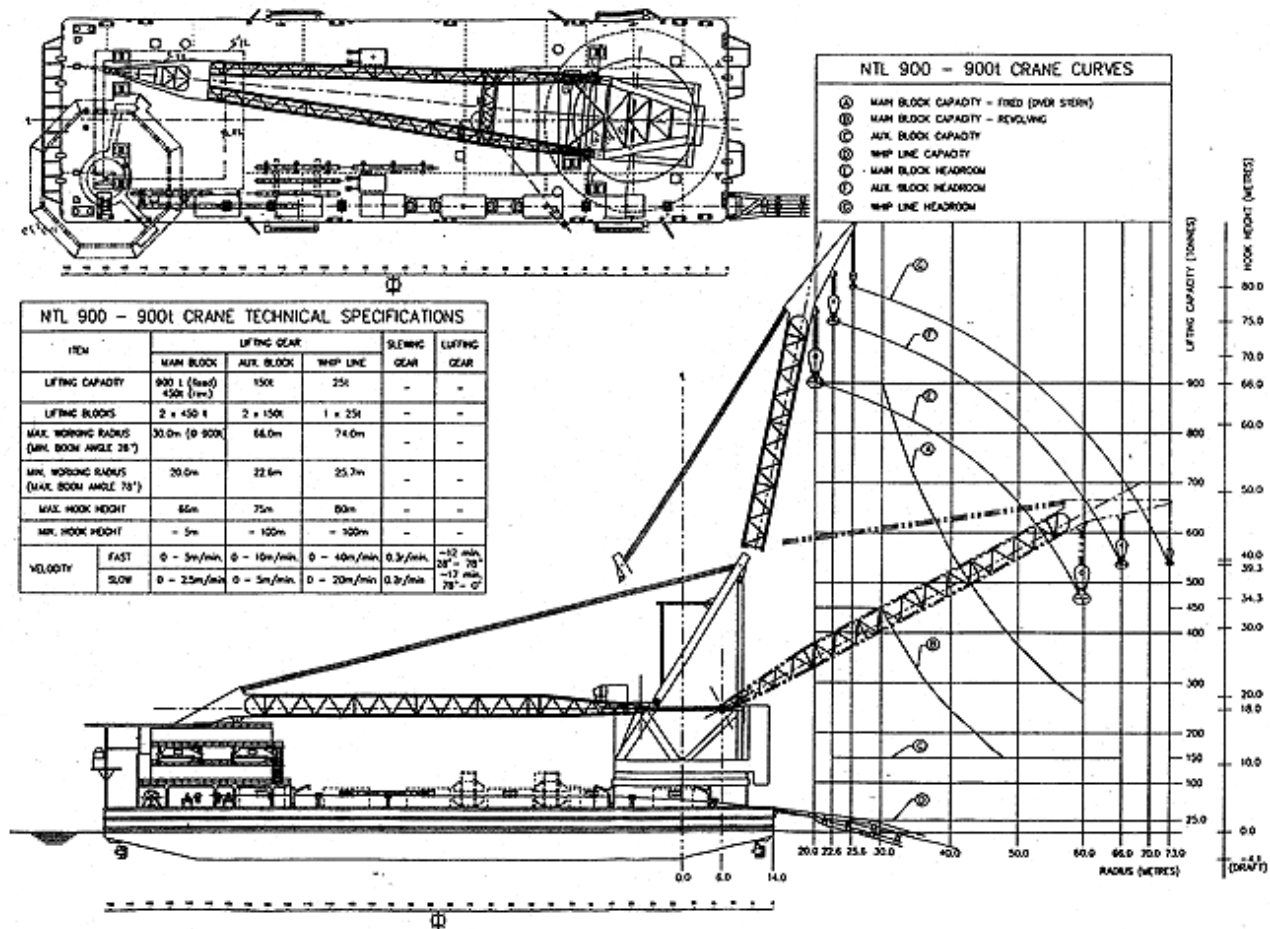
**PRINCIPAL PARTICULAR**

Year Built	1992
Classification	*ZCA
Length O.A.	100.00 m
Breadth Molded	30.00 m
Depth Molded	8.00 m
Full Load Draft	4.10 m
Gross Tonnage	8326
Net Tonnage	2497
Accommodation	125 persons
Speed	3 kn

**MACHINERY & EQUIPMENT**

Diesel Generator	2x AC 760kw
	2x AC 230kw
	1x AC 90kw
Mooring Equipment	8 point mooring system
Diving Equipment	Air diving system
	1x Remote control vehicle
Propeller	"Z" Full revolving type (3x 400kw)
Compressor	3x 20 m <sup>3</sup> /min x 0.8 mpa
	2x 4m <sup>3</sup> /min x 2 mpa
Welding Equipment	6x DC 500A

<b>CRANE</b>	
Main Hoist Capacity	2x 450t (Fixed) 1x 450t (Rev.)
Main Lifting Height	Above Level: 65 m Below Level: 5 m
Aux. Hoist Capacity	1x 150t
Aux. Lifting Height	Above Level: 75 m Below Level: 100 m
Whip Hoist Capacity	1x 25t
Whip Lifting Height	Above Level: 80 m
Deck Crane Capacity	1set x 16t x 19m
<b>TANK CAPACITY</b>	
Fuel Oil	568 m <sup>3</sup>
Fresh Water	974 m <sup>3</sup>
Ballast Water	3,635 m <sup>3</sup>



**CRANE TECHNICAL SPECIFICATIONS**

Item	Lifting Gear			Slewing Gear	Luffing Gear
	Main Block	Aux. Block	Whip Line		
Lifting Capacity	900t (fixed) 450t (rev.)	150t	25t	-	-
Lifting Blocks	2 x 450t	2 x 150t	1 x 25t	-	-

Max. Working Radius (Min. Boom Angle 28°)	30.0 m (@ 900t)	66.0 m	74.0 m	-	-
Min. Working Radius (Max. Boom Angle 78°)	20 m	22.6 m	25.7 m	-	-
Max. Hook Height	66 m	75 m	80 m	-	-
Min. Hook Height	-5 m	-100 m	-100 m	-	-
Velocity	Fast	0 - 5 m/min	0 - 10 m/min	0 - 40 m/min	0.3 r/min ~12 min. 28° - 78°
	Slow	0 - 2.5 m/min	0 - 5 m/min	0 - 20 m/min	0.2 r/min ~17 min. 78° - 0°

### Capacity Curve

